

# KOMATSU®

# PC1250LC-11 PC1250-11

*Tier 4 Final Engine*

## HYDRAULIC EXCAVATOR



Photos may include optional equipment.

### NET HORSEPOWER

758 HP @ 1800 rpm  
565 kW @ 1800 rpm

### OPERATING WEIGHT

259,960–272,600 lb  
118,164–123,909 kg

### BUCKET CAPACITY

4.4–8.8 yd<sup>3</sup>  
3.4–6.7 m<sup>3</sup>

PC1250LC / PC1250



## HIGH PERFORMANCE AND VERSATILITY

### Mass Excavation Performance

The PC1250-11 mass excavation arrangement is designed for larger buckets, provides high digging forces, high production volume and is an ideal match to 50-70 ton class trucks.

### Long Undercarriage Versatility

The PC1250LC-11 long undercarriage arrangements reach boom and 3 arm options provides an excellent combination of stability, digging performance, extended reach and depth.

**A powerful Komatsu SAA6D170E-7 engine** provides a net output of 565 kW **758 HP**. This engine is EPA Tier 4 Final emissions certified.

**Variable Geometry Turbocharger (VGT)** water cooled and hydraulically controlled to provide optimum airflow under all speed and load conditions.

**Tier 4 Final emissions system uses only Diesel Particulate Filters (DPF)** to reduce particulate matter and NOx, while providing automatic regeneration that does not interfere with daily operation. No Selective Catalytic Reduction (SCR) system of Diesel Exhaust Fluid (DEF) is required.

**Hydraulically driven reversible variable speed fan** is temperature controlled to reduce parasitic load on the engine and improve fuel consumption. Reversible fan direction helps cleaning of coolers to reduce maintenance.

**Komatsu Auto Idle and Auto Idle Shutdown** help reduce nonproductive engine idle time and reduces operating costs.

**Rear service aisle and grouped maintenance points** conveniently located behind latched access doors provide excellent access to engine and hydraulic compartments.

**Grease pump with hose reel** provides efficient lubrication of work equipment.

**Service technician restraint harness tie off points** on the boom and arm help make maintenance service more efficient.

**Battery disconnect switch** with lock out/tag out allows a technician to disconnect the power supply and prevent machine start up before servicing the machine.

**Komatsu's Open-center Load Sensing System (OLSS)** balances hydraulic pump pressure and flow for smooth multi-function operation in all digging conditions.

**Two working modes; Power +** provides up to an 8% increase in productivity, **Lift Mode** provides fine control and boosts hydraulic pressure 10% for handling objects.

**Two boom mode settings; Power** mode provides maximum digging forces. **Soft** mode reduces boom down force to minimize machine lifting when working on hard surfaces or in hammer applications.

**Boom/Swing Priority mode** increases boom raise speed in small swing angle applications or increases swing speed in large swing angle applications to reduce cycle times.

**Long undercarriage arrangement with reach boom and 3 arm options for general construction** provides lower ground pressure, a large stable operating platform and increased digging depth and reach for a wide variety of general construction applications.

**Short undercarriage arrangement with mass excavation boom and short arm** provides higher digging forces and larger bucket capacity for high volume stripping and mass excavation projects.

### Enhanced working environment

- High back, heated air, suspension operator seat with adjustable arm rests
- Auto climate control
- Cab is Operator Protective Guard (OPG) top guard level 1 compliant (ISO12117-2)
- Standard OPG Level 2 cab top guard conforms to ISO 10262 standards
- Aux jack and (2) 12V power outlets
- Low operator sound level
- Large skylight with sliding sunshade

### Large LCD color monitor panel:

- 7" high resolution screen
- "Ecology-Guidance" provides operator recommendations for fuel efficient operation
- KomVison camera display integrated into the monitor display for improved operator awareness of the work area.

**Operator Identification System** records KOMTRAX machine operation and application data for up to 100 individual codes.

**KomVison "birds eye" view camera system** (Standard) uses four cameras to provide a "birds eye" view of surrounding machine area for improved operator situational awareness.

**Handrails (standard)** located on the machine upper structure provide a convenient work area on the top right side of the machine.

**Large walkway with handrails** on left side of machine provides convenient access to the hydraulic pump compartment.

### KOMTRAX®

The KOMTRAX® telematics system is standard on Komatsu equipment with no subscription-fees throughout the life of the machine. Using the latest wireless technology, KOMTRAX® transmits valuable information such as location, utilization, and maintenance records to a PC or smartphone app. Custom machine reports are provided for identifying machine efficiency and operating trends. KOMTRAX® also provides advanced machine troubleshooting capabilities by continuously monitoring machine health.

**KOMTRAX Plus®** Continuously monitors 123 machine operating parameters and records machine health, detailed history and operational data. Detailed operating parameter history aids in diagnostics and repair or replacement decisions.

**Komatsu designed and manufactured components**

# SPECIFICATIONS



## ENGINE

Model.....Komatsu SAA6D170E-7\*  
 Type.....Water-cooled, 4-cycle, direct injection  
 Aspiration.....Turbocharged, aftercooled, cooled, EGR  
 Number of cylinders..... 6  
 Bore..... 170 mm **6.69"**  
 Stroke..... 170 mm **6.69"**  
 Piston displacement.....23.15 ltr **1413 in<sup>3</sup>**  
 Horsepower:  
 SAE J1995.....Gross 578 kW **775 HP**  
 ISO 9249 / SAE J1349.....Net 565 kW **758 HP**  
 Rated rpm..... 1800  
 Hydraulic fan at maximum speed..... Net 519 kW **696 HP**  
 Governor..... All-speed control, electronic  
 Fan drive method for radiator cooling..... Hydraulic  
 \*EPA Tier 4 Final emissions certified



## HYDRAULICS

Type.....Open-center load sensing system,  
 1 selectable working mode  
 Main pump:  
 Type..... Variable capacity piston  
 Maximum flow implement and travel..... 2 x 494 ltr/min  
**2 x 130.5 gal/min**  
 Maximum flow swing..... 1 x 600 ltr/min **1 x 158.5 gal/min**  
 Sub-pump for control circuit..... Gear type  
 Fan drive pump..... Variable-capacity piston type  
 Hydraulic motors:  
 Travel..... 2 x axial piston motors with parking brake  
 Swing..... 2 x axial piston motors with swing holding brake  
 Relief valve setting:  
 Implement circuits..... 31.4 MPa 320 kgf/cm<sup>2</sup> **4,550 psi**  
 Travel circuit..... 34.3 MPa 350 kgf/cm<sup>2</sup> **4,980 psi**  
 Swing circuit..... 29.4 MPa 300 kgf/cm<sup>2</sup> **4,267 psi**  
 Pilot circuit..... 3.1 MPa 33 kgf/cm<sup>2</sup> **455 psi**  
 Hydraulic cylinders:  
 (Number of cylinders – bore x stroke x rod diameter)  
 Boom .... 2–225 mm x 2390 mm x 160 mm **8.9" x 94.1" x 6.3"**  
 Arm ..... 1–250 mm x 2435 mm x 170 mm **9.8" x 95.9" x 6.7"**  
 Bucket:  
 Standard. 2–160 mm x 1825 mm x 115 mm **6.3" x 71.8" x 4.5"**  
 SP .....2–160 mm x 1950 mm x 115 mm **6.3" x 76.8" x 4.5"**



## DRIVES AND BRAKES

Steering control.....Two levers with pedals  
 Drive method..... Fully hydrostatic  
 Travel motor.....Axial piston motor, in-shoe design  
 Reduction system..... Planetary triple reduction  
 Maximum drawbar pull..... 686 kN 70000 kgf **154,320 lbf**  
 Gradeability..... 70%, 35%  
 Maximum travel speed:  
 High..... 3.3 km/h **2.0 mph**  
 Low..... 2.3 km/h **1.5 mph**  
 Service brake..... Hydraulic lock  
 Parking brake..... Oil disc brake



## SWING SYSTEM

Drive method.....2 x hydraulic motors  
 Swing reduction..... Planetary gear  
 Swing circle lubrication..... Grease-bathed  
 Service brake..... Oil disc brake  
 Holding brake/swing lock..... Mechanical disc brake  
 Swing speed..... 5.8 rpm  
 Swing torque.....406.1 kN•m **299,524 lb•ft**



## UNDERCARRIAGE

Center frame.....H-leg  
 Track frame.....Box-section  
 Track type..... Sealed  
 Track adjuster.....Hydraulic  
 Number of carrier rollers (each side)..... 3  
 Number of shoes (each side):  
 Standard, SP..... 48  
 Long undercarriage..... 55  
 Number of track rollers (each side):  
 Standard, SP..... 8  
 Long undercarriage..... 10



## COOLANT & LUBRICANT CAPACITY (REFILLING)

Fuel tank..... 1,360 ltr **359.3 U.S. gal**  
 Coolant..... 142 ltr **37.5 U.S. gal**  
 Engine..... 86 ltr **22.7 U.S. gal**  
 Final drive, each side.....21 ltr **5.5 U.S. gal**  
 Swing drive..... 2 x 20 ltr **5.3 U.S. gal**  
 Hydraulic tank..... 670 ltr **177.0 U.S. gal**



## SOUND PERFORMANCE

Exterior – ISO 6395.....109.9 dB(A)  
 Operator – ISO 6396..... 68.5 dB(A)



## OPERATING WEIGHT (APPROXIMATE)

**Mass Excavation:**  
 PC1250-11: Operating weight, including **25'7"** 7800 mm boom, **11'2"** 3400 mm arm, 6.7 m<sup>3</sup> **8.8 yd<sup>3</sup>** bucket, track roller guard, operator, lubricant, coolant, full fuel tank, and standard equipment.

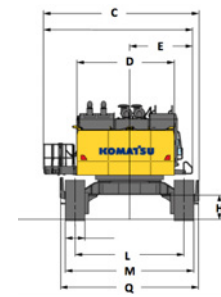
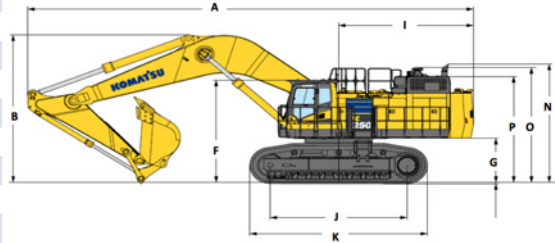
**Backhoe:**  
 PC1250LC-11: Operating weight, including **29'10"** 9100 mm boom, **11'2"** 3400 mm arm, 5.0 m<sup>3</sup> **6.5 yd<sup>3</sup>** bucket, operator, lubricant, coolant, full fuel tank, and standard equipment.

Triple-Grouser Shoes	PC1250-11		PC1250LC-11 Gauge	
	Operating Weight	Ground Pressure (ISO 16754)	Operating Weight	Ground Pressure (ISO 16754)
700 mm	118164 kg	1.54 kg/cm <sup>2</sup>		
<b>28"</b>	<b>259,960 lb</b>	<b>21.85 psi</b>		
1000 mm	120864 kg	1.10 kg/cm <sup>2</sup>	122409 kg	0.95 kg/cm <sup>2</sup>
<b>39.4"</b>	<b>265,900 lb</b>	<b>15.64 psi</b>	<b>269,300 lb</b>	<b>13.45 psi</b>
1200 mm			123909 kg	0.80 kg/cm <sup>2</sup>
<b>47.25"</b>			<b>272,600 lb</b>	<b>11.35 psi</b>



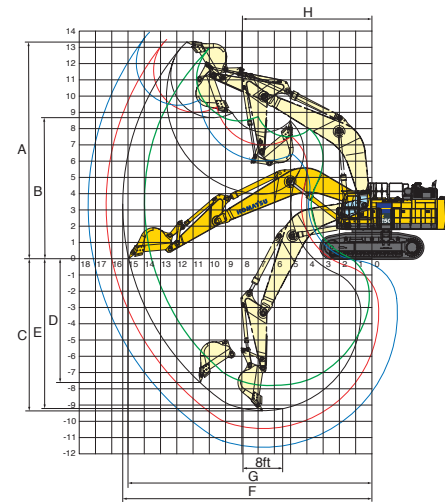
## DIMENSIONS

	PC1250LC-11			PC1250-11
Boom Length	9100mm 29'10"			7800mm 25'7"
Arm Length	3400mm 11'2"	4500mm 14'9"	5700mm 18'8"	3400mm 11'2"
A Overall Length	16070mm 52'9"	16100mm 52'10"	15890mm 52'2"	14840mm 48'8"
B Overall Height to top of boom	6040mm 19'10"	6460mm 21'2"	6990mm 22'11"	6265mm 20'7"
C Overall width (walkway installed)	5720mm 18'10"			5570mm 18'3"
D Upper width (L/R walkways walkway removed)	3490mm 11'5"			3490mm 11'5"
E Upper width (R walkway walkway removed)	2260mm 7'5"			2260mm 7'5"
F Overall height to top of cab	4120mm 13'6"			4120mm 13'6"
G Ground clearance, counterweight	1780mm 5'10"			1780mm 5'10"
H Ground clearance, minimum	990mm 3'3"			990mm 3'3"
I Tail swing radius	4860mm 15'11"			4860mm 15'11"
J Track length on ground	5970mm 19'7"			4995mm 16'5"
K Track length	7400mm 24'3"			6425mm 21'1"
L Track gauge	3900mm 12'10"			3900mm 12'10"
M Width over crawler				
28" 700mm shoe	N/A			4600mm 15'1"
39.4" 1000mm shoe	4900mm 16'1"			4900mm 16'1"
47.25" 1200mm shoe	5100mm 16'9"			N/A
N Height to Exhaust Stack	4810mm 15'9"			4810mm 15'9"
O Height to air cleaner	4650mm 15'3"			4650mm 15'3"
P Height to top of engine hood	4300mm 14'1"			4300mm 14'1"
Q Undercarriage width step to step	4965mm 16'4"			4965mm 16'4"



## WORKING RANGE

	Boom Length	PC1250-11		PC1250LC-11			
		7.8 m 25'7"	9.1 m 29'10"	9.1 m 29'10"	9.1 m 29'10"	9.1 m 29'10"	9.1 m 29'10"
	Arm Length	3.4 m 11'2"	4.5 m 14'9"	5.7 m 18'8"	5.7 m 18'8"	3.4 m 11'2"	3.4 m 11'2"
A Max. digging height		13000 mm 42'8"	13490 mm 44'3"	13910 mm 45'8"	13400 mm 44'0"		
B Max. dumping height		8450 mm 27'9"	9000 mm 29'6"	9440 mm 31'0"	8680 mm 28'6"		
C Max. digging depth		7900 mm 25'11"	10440 mm 34'3"	11590 mm 38'0"	9350 mm 30'8"		
D Max. vertical wall digging depth		5025 mm 16'6"	8490 mm 27'10"	9480 mm 31'1"	7610 mm 25'0"		
E Max. digging depth for 8'level bottom		7745 mm 25'5"	10340 mm 33'11"	11500 mm 37'9"	9220 mm 30'3"		
F Max. digging reach		14070 mm 46'2"	16340 mm 53'7"	17450 mm 57'3"	15350 mm 50'4"		
G Max. digging reach at ground level		13670 mm 44'10"	16000 mm 52'6"	17130 mm 56'2"	15000 mm 49'3"		
H Min. swing radius		6415 mm 21'1"	7990 mm 26'3"	8150 mm 26'9"	7965 mm 26'2"		
SAE rating	Bucket digging force at power max.	502 kN 51,200 kg / 112,900 lb	422 kN 43,000 kg / 94,900 lb	343 kN 35,000 kg / 77,160 lb	422 kN 43,000 kg / 94,800 lb		
	Arm crowd force at power max.	395 kN 40,300 kg / 88,860 lb	327 kN 33,300 kg / 73,400 lb	281 kN 28,700 kg / 63,270 lb	392 kN 40,000 kg / 88,180 lb		
ISO rating	Bucket digging force at power max.	570 kN 58,100 kg / 128,110 lb	479 kN 48,800 kg / 107,590 lb	389 kN 39,700 kg / 87,520 lb	479 kN 48,800 kg / 107,590 lb		
	Arm crowd force at power max.	412 kN 42,000 kg / 92,590 lb	337 kN 34,400 kg / 75,840 lb	286 kN 29,200 kg / 64,375 lb	412 kN 42,000 kg / 92,590 lb		



AESS861-00

©2018 Komatsu America Corp.

AD07(Electronic View Only)

07/18 (EV-1)

# KOMATSU®

*Note: All comparisons and claims of improved performance made herein are made with respect to the prior Komatsu model unless otherwise specifically stated.*

www.komatsuamerica.com

Komatsu America Corp. is an authorized licensee of Komatsu Ltd.

Materials and specifications are subject to change without notice

**KOMATSU**, Komatsu Care®, KOMTRAX® and KOMTRAX Plus® are registered trademarks of Komatsu Ltd.

All other trademarks and service marks used herein are the property of Komatsu Ltd., Komatsu America Corp. or their respective owners or licensees.

PC1250LC/PC1250-11