



High breakout force and  
tipping load

Modulation Clutch provides  
a smooth approach when  
loading trucks

Increased durability of  
the frame and extended  
component benchmarks

**SMS**  
EQUIPMENT

**KOMATSU**

WHEEL LOADER  
**WA900**



WA900-8

## Walkaround

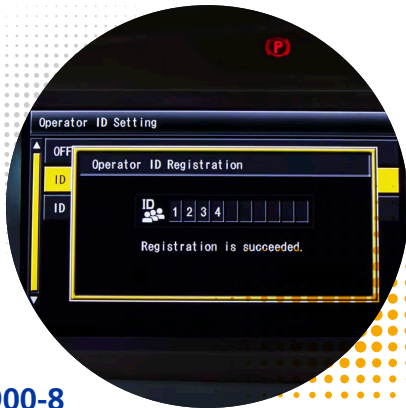
[Click for Video](#)



WA900-8

## Familiarization

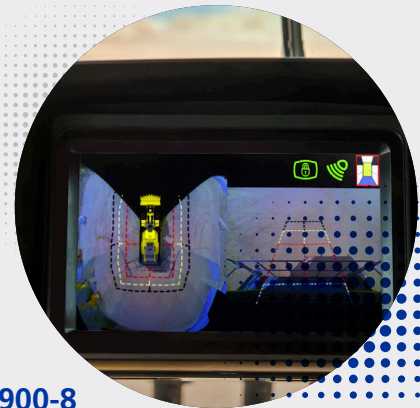
[Click for Video](#)



WA900-8

## Monitor Display

[Click for Video](#)



WA900-8

## KomVision

[Click for Video](#)



WA900-8

## Gauge Monitor

[Click for Video](#)



WA900-8

## Equipment Controls

[Click for Video](#)



# KOMATSU WA900-8

The Komatsu WA900-8 is a high production quarry and mining wheel loader. Designed for loading 70 to 150-ton haul trucks, the WA900-8 can be configured for a variety of applications to meet customer needs. A throttle lock and modulation clutch enable operators to quickly load trucks while Komatsu SmartLoader Logic and a closed center load sensing hydraulic system reduce fuel consumption. The z-bar linkage gives the WA900-8 best in class breakout force for even the toughest digging applications. Optional KomVision with Radar Obstacle Detection provides the operator with a bird's-eye view of the working area on a dedicated monitor.

<b>Emission Rating</b>	Tier 4 Final
<b>Net Horsepower</b>	899 HP @ 2,050 rpm (671 kW @ 2,050 rpm)
<b>Max Operating Weight</b>	256,618 lb (116,400 kg)
<b>Heaped Body Capacity</b>	15 yd <sup>3</sup> (11.50 m <sup>3</sup> )



DOWNLOAD THE **WA900-8 BROCHURE**