



WARRANTY SOLUTIONS



Sword Program

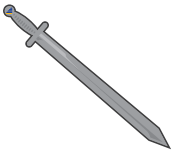


Shield Program



Armour Program

SMS Equipment Warranty Solutions offers a comprehensive extended warranty program for your equipment operating in Canada.



Sword Program

 **POWERTRAIN ONLY**



Shield Program

 **POWERTRAIN + HYDRAULICS**



Armour Program

 **FULL MACHINE**

Extended warranty is an excellent way to reduce risk and manage your cash flow. It utilizes a no deductible program and includes travel with flexible options.

Knowing that your machine will be repaired with genuine manufactured parts by a SMS Equipment Certified Technician; who utilizes the latest factory solutions, will bring peace of mind.

Our Mission

SMS Equipment is a global leader for equipment distribution dedicated to continuously improving our services and product offerings to meet the unique requirements of our customers. Partnering with leading manufacturers and employees, SMS Equipment strives to be your number one solutions provider in the construction, forestry, mining and utility industries.

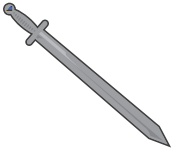
Contact your local sales representative for further information.

Levels of Coverage

See contract for further details.

	Sword	Shield	Armour
Engine including Electronic Controllers and Wiring Harness	●	●	●
Engine Emission System DPF, CCV, EGR SCR, DEF System	●	●	●
Dampner, Power Take Off, Pump Drive Gear Box, Transfer Box	●	●	●
Torque Converter including Modulating Slip Clutch	●	●	●
Transmission including Pumps, Electronic Controllers, and Wiring Harness	●	●	●
Bevel Gear and Shaft, Planetary Steering Units, Steering Clutches	●	●	●
Final Drives, Differentials, Axle Assemblies	●	●	●
Tandem Drives. Drive Shaft, HST/HMT/HSS	●	●	●
Intelligent Machine Control (iMC)'s Wiring Harness and Sensors	●	●	●
Oils, Fluids and Filters if used in Repair	●	●	●
Piston Pump and Motors		●	●
Steering and Gear Pumps		●	●
Hydraulic Control Valves and Cylinders		●	●
Hydrostatic Drive System		●	●
Hydraulic Vibration System Components		●	●
Accumulators (Brake, Steering, Hydraulic)		●	●
Swing Gear Box and Swing Bearing		●	●
Vibration Mechanism			●
Alternators and Starters			●
Radiators			●
Cab Heater and Air-Conditioning			●
Wiring Harnesses			●
All Electrical and Electronic Parts			●

Komatsu Equipment



Sword Program



Shield Program



Armour Program

Warranty Solutions for your Komatsu equipment operating in Canada include:

- Sword Program
- Shield Program
- Armour Program

Program Highlights

- \$0 deductible
- Travel time and KM's included*
- Includes oil + filters as part of the repair procedure
- Further price reduction with enrollment in SMS Equipment Preventative Maintenance Program (PMP)
- Custom coverage + terms
- Cost can be included with financing
- Includes DEF System & SCR System
- Includes iMC equipment

KOMATSU

Komatsu Equipment



Komatsu Excavators



Komatsu Wheel Loaders



Komatsu Dozers



Komatsu Articulated Trucks



Komatsu Mechanical Trucks



Komatsu Motor Graders



Komatsu Processors



Komatsu Log Loaders

Komatsu Forestry Equipment



Shield Program

Warranty Solutions for your Komatsu Forestry equipment operating in Canada include:

- Shield Program

Program Highlights

- \$0 deductible
- Travel time and KM's included*
- Includes oil + filters as part of the repair procedure
- Further price reduction with enrollment in SMS Equipment Preventative Maintenance Program (PMP)
- Custom coverage + terms
- Cost can be included with financing
- Includes DEF System & SCR System

Komatsu Forestry Equipment



Komatsu Bunchers



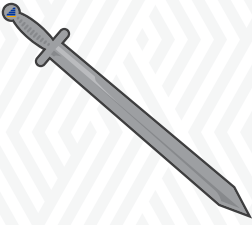
Komatsu Forwarders



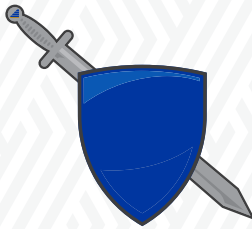
Komatsu Harvesters

IMC COMPONENTS

Warranty Solutions for your IMC components:



Sword Program



Shield Program



Armour Program

The SMS Equipment Extended Warranty Program, Warranty Solutions is an excellent way to reduce and manage unforeseen downtime within your technology fleet. Warranty Solutions will provide you flexibility and reassurance that your investment is protected long term. Technology components are included in the SMS Equipment Warranty Solution packages.

What's Included:

- Cellular Modem
- Controller
- Cylinder Stroke Sensors
- GNSS Antenna
- GNSS Receiver
- iMC Monitor
- Reset Sensors
- Wiring

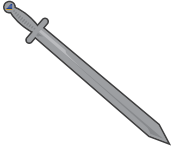


- | | | |
|-----------------------------|------------------------------|---|
| 1. Cylinder Stroke Sensors | 6. Inertial Measurement Unit | 9. GNSS Receiver, Two Controllers (ICT Sensors, Work Equipment), Cellular Modem, Controller |
| 2. Wiring Harness | 7. Arm Reset Sensor | |
| 3. Control Box (PH700) | 8. Boom Reset Sensor | |
| 4. Radio & Cellular Antenna | | |
| 5. GNSS Antenna | | |



- | | | |
|--------------------------------------|------------------------------|----------------------------------|
| 1. Tilt Cylinder With Stroke Sensor | 4. iMC Monitor Controller | 7. Radio & Cellular Antenna |
| 2. Angle Cylinder With Stroke Sensor | 5. Inertial Measurement Unit | 8. GNSS Receiver, Sitelink Modem |
| 3. Lift Cylinder With Stroke Sensor | 6. GNSS Antenna | 9. Navigation controller |

Bomag Equipment



Sword Program



Shield Program



Armour Program

Warranty Solutions for your Bomag equipment operating in Canada include:

- Sword Program
- Shield Program
- Armour Program

Program Highlights

- \$0 deductible
- Travel time and KM's included*
- Includes oil + filters as part of the repair procedure
- Further price reduction with enrollment in SMS Equipment Preventative Maintenance Program (PMP)
- Custom coverage + terms
- Cost can be included with financing
- Includes DEF System & SCR System



Bomag Equipment



Bomag Cold Milling Machines



Bomag Refuse Compactor



Bomag Pavers



Bomag Asphalt Compactor

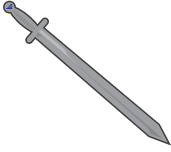


Bomag Soil Compactor



Bomag Stabilizer

Takeuchi Equipment



Sword Program



Shield Program



Armour Program

Warranty Solutions for your Takeuchi equipment operating in Canada include:

- Sword Program
- Shield Program
- Armour Program

Program Highlights

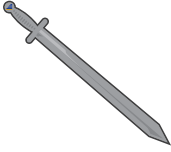
- \$0 deductible
- Includes oil + filters as part of the repair procedure
- Further price reduction with enrollment in SMS Equipment Preventative Maintenance Program (PMP)
- Custom coverage + terms
- Cost can be included with financing
- Includes DEF System & SCR System
- Telematics

TAKEUCHI

Takeuchi Equipment



Used Equipment



Sword Program



Shield Program



Armour Program

Warranty Solutions for your used equipment operating in Canada include:

- Sword Program
- Shield Program
- Armour Program

Program Highlights

- \$0 deductible
- Travel time and KM's included*
- Includes oil + filters as part of the repair procedure
- Further price reduction with enrollment in SMS Equipment Preventative Maintenance Program (PMP)
- Custom coverage + terms
- Cost can be included with financing
- Includes DEF System & SCR System
- Includes iMC equipment

Terms & Conditions

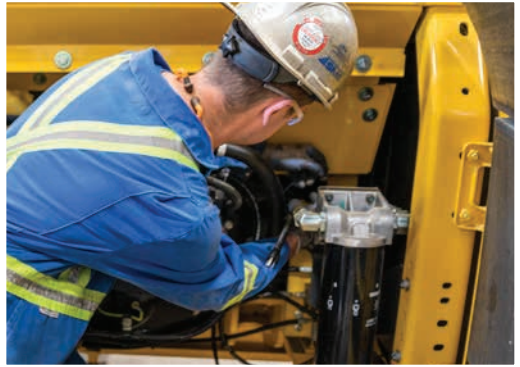
The Extended Warranty does not cover:

- Wear and maintenance items
- Non-OEM attachments
- Damage to machine from misuse or abuse

*Max 1000KM or 2 round trips + 12.5 hours travel labour per claim.

Customers Responsibilities for maintaining this coverage are:

- Operate and maintain the machine as per manufacturers guidelines
- Maintain the equipment's monitoring systems
- Complete oil sampling on the machine every 500 hours or drain interval
- Notify SMS Equipment immediately of any possible warranty issues



CANADA

ALBERTA

Acheson

53113 Range Road 263A
Acheson, AB T7X 5A5
Phone: 780-948-2200
Fax: 780-960-0561

Calgary

3320 50 Avenue SE
Calgary, AB, T2B 3J4
Phone: 403-569-1109
Fax: 403-569-1127

Edmonton

16116 111 Avenue
Edmonton, AB, T5M 2S1
Phone: 780-451-2630
Fax: 780-451-2646

Fort McMurray

22K Highway 63 North
Fort McMurray, AB, T9H 3G2
Phone: 780-714-5300
Fax: 780-743-2787

Grande Prairie

9116 - 108th Street
Grande Prairie, AB, T8V 4C8
Phone: 780-532-9410
Fax: 780-539-0532

Hinton

260 Felaber Road
Hinton, AB, T7V 1Z8
Phone: 780-865-5905
Fax: 780-451-2646

Red Deer

96 Quinn Avenue
Red Deer, AB, T4P 0V9
Phone: 403-340-8343
Fax: 403-340-3887

BRITISH COLUMBIA

Campbell River

1461 Willow Street
Campbell River, BC, V9W 6J6
Phone: 250-286-0694
Fax: 250-286-1505

Chetwynd

4513 45th Avenue
Chetwynd, BC, V0C 1J0
Phone: 250-788-7920
Fax: 250-788-7925

Elkford

#1 Intata Road
Elkford, BC, V0B 1H0
Phone: 250-865-4651
Fax: 250-865-2644

Fort St. John

8911 72 Street
Ft. St. John, BC, V1J 0B4
Phone: 250-785-8161
Fax: 250-787-7323

Houston

Unit #1, 2350 Nadina North
Avenue
Houston, BC, V0J 1Z0
Phone: 250-845-7911
Fax: 250-845-7917

Kamloops

1785 Versatile Drive
Kamloops, BC, V1S 1C5
Phone: 250-374-6961
Fax: 250-828-2332

Prince George

1063 Great Street
Prince George, BC, V2N 2K8
Phone: 250-564-8841
Fax: 250-562-8691

Surrey

19520 Telegraph Trail
Surrey, BC, V4N 4H1
Phone: 604-888-9700
Fax: 604-888-9699

Williams Lake

1115 Boundary Street
Williams Lake, BC, V2G 4K3
Phone: 250-305-1060
Fax: 250-305-1070

MANITOBA

Winnipeg

147 Mountain View Road
Winnipeg, MB, R3C 2E6
Phone: 204-487-1050
Fax: 204-487-0695

NEW BRUNSWICK

Fredericton

448 Hodgson Road
Fredericton, NB, E3C 2G5
Phone: 506-457-5544
Fax: 506-459-5682

Moncton

50 Macnaughton Ave
Moncton, NB, E1H 3L9
Phone: 506-857-9513
Fax: 506-857-9449

NEWFOUNDLAND & LABRADOR

Paradise

5 St. Anne's Crescent
Paradise, NL, A1L 3W1
Phone: 709-782-2151
Fax: 709-782-2155

Wabush

10 Second Avenue Wabush
Industrial Park
Wabush, NL, A0R 1B0
Phone: 709-282-3777
Fax: 709-282-3778

NWT

Yellowknife

14 Ellesmere Drive
Yellowknife, NT, X1A 2P6
Phone: 867-669-0738
Fax: 867-669-0897

ONTARIO

Bolton

14025 Humber Station Road
Bolton, ON, L7E 0Z9
Phone: 833-264-4301

Fort Frances

16 Highway 11/71
Fort Frances, ON
P9A 3M2

Thunder Bay

5 Haniak Road
Rosslyn, ON, P7K 0C7
Phone: 807-939-2262
Fax: 807-939-2146

Timmins

1961 Riverside Drive
Timmins, ON, P4R 0A4
Phone: 705-264-4300
Fax: 705-264-4322

QUEBEC

Baie-Comeau

2027, Ave du Labrador
Baie-Comeau, QC, G4Z 3B9
Phone: 418-296-6671
Fax: 418-296-4136

Chicoutimi

205 rue Clément Gilbert
Chicoutimi, QC, G7H 5B1
Phone: 418-549-0022
Fax: 418-543-1994

Laval

1800 Montgolfier
Laval, QC, H7T 0L9
Phone: 450-781-9600
Fax: 450-681-0451

St Augustin-de-Desmaures

120, rue de New-York
St-Augustin-de-Desmaures,
QC, G3A 0A8
Phone: 418-870-1502
Fax: 418-870-1506

Saint-Bruno

1401 rue Hocquart
St-Bruno, QC, J3V 6B5
Phone: 450-441-1201
Fax: 450-441-4383

Trois-Rivières

4500, rue Raymond-
Bellemare
Trois-Rivieres, QC, G9B 0G3
Phone: 819-375-9383
Fax: 819-375-9520

Val-d'Or

1085, 3e Avenue Est
Val d'Or, QC, J9P 0J7
Phone: 819-874-3733
Fax: 819-874-3727

SASKATCHEWAN

Regina

4600 E Victoria Ave.
Eastgate Drive
Regina, SK, S4P 3C6
Phone: 306-359-3121
Fax: 306-347-8581

Saskatoon

2907 Millar Avenue
Saskatoon, SK, S7K 6P6
Phone: 306-931-0044
Fax: 306-931-3222

YUKON

Whitehorse

11 Poplar Road, Taylor
Industrial Area
Whitehorse, YT, Y1A 4L2
Phone: 867-335-9742
Fax: 867-668-3771

USA

ALASKA

Anchorage

8895 King Street
Anchorage, AK 99515, USA
Phone: 855-457-3687